

**MYSTIC VALLEY  
REGIONAL CHARTER SCHOOL**

**770 Salem St.  
Malden, MA 02148  
781-388-0222  
781-388-1964 (FAX)**

**ANNUAL REPORT**

**SCHOOL YEAR 2008-2009**

# MYSTIC VALLEY REGIONAL CHARTER SCHOOL

## TABLE OF CONTENTS

<b>Introductory Description of the School</b>	<b>3</b>
<b>Letter from Board of Trustees Chairman</b>	<b>5</b>
<b>Mission Statement</b>	<b>7</b>
<b>2008-2009 School Performance in Relation to Accountability</b>	<b>7</b>
<b>1. Faithfulness to Charter</b>	<b>7</b>
<b>2. Academic Program</b>	<b>9</b>
<b>3. Organizational Viability</b>	<b>17</b>
<b>Dissemination Activities</b>	<b>18</b>
<b>School Finance and Operations</b>	<b>19</b>
<b>Balance Sheet (unaudited)</b>	<b>19</b>
<b>Income Statement (unaudited)</b>	<b>20</b>
<b>School Budget FY10</b>	<b>21</b>
<b>Data Section</b>	<b>24</b>
<b>Instructional Time</b>	<b>24</b>
<b>Student Enrollment Information</b>	<b>24</b>
<b>Student Demographic and Subgroup Information</b>	<b>24</b>
<b>Administrative Roster for FY09</b>	<b>25</b>
<b>Teacher and Staff Attrition for FY09</b>	<b>25</b>
<b>Board of Trustees</b>	<b>26</b>
<b>MCAS Results Spring 2008</b>	<b>27</b>
<b>Organizational Chart</b>	<b>28</b>

# MYSTIC VALLEY REGIONAL CHARTER SCHOOL

## Introductory Description of the School

The Mystic Valley Regional Charter School (MVRCS) was established in 1998 to provide the communities of Malden, Melrose, Medford, Stoneham, Everett and Wakefield with an alternative choice in public education. The school's basic academic design was centered on research-based curricular models that had proven records of success. An academic and organizational framework was established in order to implement the curricula.

The academic and organizational framework was carefully created to meet the student learning expectations of the school's founders. The founders understood that clearly defined expectations for student learning would be essential to the realization of the lofty goals that they held for school-wide academic success. The entire curriculum structure was based on measurable learning attainments for students in all subjects and grade levels. These learning attainments were primarily dictated by the learning standards set forth in the curricula that would make up the school's general academic structure. *Direct Instruction*, *Core Knowledge*, *Saxon Math* and the *International Baccalaureate* became the primary components of Mystic Valley's general K-12 curricular structure.

The mission statement and all subsequent plans and policies were formulated from the founders' shared vision. Policies and practices that set the parameters for the school's daily operation also closely followed the mission statement. As a new school community, the leadership team and faculty took advantage of opportunities to create a school climate free from old and established practices that often resulted in discord and a lack of unity among the general staff.

An important distinguishing factor in the school's original design was an extended school day and an extended school year. Regular school days begin at 8:00 a.m. and ended at 3:30 p.m. The school year included 200 school days as opposed to the traditional 180 school days found in most public schools. Priorities in daily time allotment for each subject area were given to Reading, Math and English/Language Arts in the foundational years of grades K-6. It was thought that the opportunities for successful achievement in these areas were essential for success in later grades. The concept of skill practice was also heavily emphasized throughout the curriculum and clearly defined in the school's written documents.

Data collection on a weekly, monthly, and yearly basis has always been an integral part of the academic operations at Mystic Valley. Weekly assessments of student progress are conducted for grades K-12. Ability-based instructional groups based on placement standards in Reading and Math are established and consistently monitored. Block scheduling, frequent assessments and augmented staffing provide the necessary support for accurate weekly reports on student progress toward learning objectives. Assessments for competency in grades K-6 are typically conducted every five lessons. The curriculum for all subjects is standardized and codified for all teachers in grades K-12. Pace of delivery is also monitored and expected to meet specific criteria. Competence in Math and Reading are determined by a correct answer rate of 80% for K-6 students in the corresponding ability-based instructional groups. This percentage constitutes a mastery-level learning rate. Students who do not receive a correction rate of 80% are given remedial exercises on the deficient skill. A second assessment is then conducted to determine if the 80% rate has been reached.

Character education became another important part of the K-12 curriculum at Mystic Valley. It is the first class taught each school day in all grades. Core virtues, important civic-oriented values and positive character traits became the major objectives of the curriculum. Instructional methods vary in accordance with age and grade-appropriate content.

## MYSTIC VALLEY REGIONAL CHARTER SCHOOL

Faculty and staff, throughout all grade levels, uniformly implement a single student conduct code and general school and classroom management strategy that are based on the principles taught in the Character Education program. An assertive discipline approach is used in conjunction with positive reinforcement strategies. The school encourages and expects the support of parents in reinforcing all behavioral expectations for students.

Communication between teachers in the same academic department and the same grade level is a regular practice at MVRCS. The structure that was developed for the fulfillment of this particular academic and operational goal begins with the members of the leadership team. The assistant director of the lower school holds supervisory responsibility for all personnel and academic operations from grades K-8. The assistant director of the high school holds the same responsibility for grades 9-12. Communication and coordination concerning all academic matters takes place regularly among these academic leaders along with the school superintendent and other members of the leadership team.

The next level of coordination involves the professional development coordinators and the department heads for each academic subject. They oversee the implementation of their particular subject matter in grades K-12. Lead teachers at each grade level for K-8 provide daily operational and academic support to the teachers they work with. The school's master schedule allows for regular team and department meetings. Formal cross-department and cross-grade level meetings take place regularly.

All of the academic leaders mentioned above play a role in the school's oversight of the implementation of the established learning standards for each academic area. The learning standards have been clearly outlined in the curriculum guides for each subject. From this established structure, all teachers and support services personnel work to instruct students toward the successful achievement of the school's standards.

After the foundational years had passed, the second phase of the school's design was implemented in the form of the International Baccalaureate Diploma Programme (IB). The academic virtues of the IB curriculum were a natural fit with the high scholastic ideals that were a part of the school's founding vision.

Although the school is quite young by most measures, validation of its sound academic structure has not been long in coming. The school's MCAS results have consistently placed its students in a strong position relative to its sending districts. In 2008 U.S. News and World Report recognized the school as one of the nation's best high schools and in 2009 Newsweek declared Mystic Valley one of the top three high schools in Massachusetts and one of the best in the nation.

# MYSTIC VALLEY REGIONAL CHARTER SCHOOL

July 31, 2009

Dear Mystic Valley Community,

It is with great pleasure and gratification that I report to you that during fiscal year 2009, Mystic Valley had another very successful year. Forty-one students graduated this year in our fourth graduating class, more than double the number which graduated in our first graduating class three years ago. Of particular note is that this class, which started at Mystic Valley in second grade, spent 220 more days in school than any other school system in the area. To the Class of 2009 congratulations and good luck!

Significant achievements during 2009 included but were not limited to the following:

- Newsweek magazine ranked Mystic Valley the 94<sup>th</sup> best High School in America
- Three members of the Class of 2009 had perfect 800 scores on portions of their SAT exams.
- Nineteen seniors were awarded the Commonwealth of Massachusetts' Abigail Adams Scholarship entitling them to four years of free tuition at any Massachusetts State College or University.
- Six members of the 2009 graduating class achieved the prestigious IB Diploma which will earn them college credits.
- Mystic Valley's first Ivy League acceptance of one of our students who will attend Yale next year. This same student also is a National Merit Scholarship Award Finalist.
- One member of the Class of 2010 has been accepted to the MITES Engineering and Science Summer Program at MIT
- 98% of the members of the graduating class will be attending college in the fall.
- Mystic Valley continued to significantly out perform our sending districts on the MCAS exams. 100% of Mystic Valley's 10<sup>th</sup> graders passed their MCAS exams and 94% of the eighth graders scored Advanced or Proficient on the ELA portion of their exams.
- The Girls Varsity Basketball team qualified for the state tournament for the third straight year and won the schools first ever tournament game.
- The Boys Basketball, Girls Softball, Boys Baseball and Boys Varsity Lacrosse (in its inaugural season) qualified for the state tournament.
- Repeat CAC Championships in both Cross Country and Swimming (seven members of the cross country team and an amazing 14 members of the swim team were named all stars including one student named CAC Swim MVP).

Furthermore, in response to the student and parent demand, the school: fielded its first varsity girls soccer team; voted to begin a boys club soccer team and will move up from a junior varsity to a varsity Hockey team next year.

## MYSTIC VALLEY REGIONAL CHARTER SCHOOL

In addition to the banner year for academics and sports, Mystic Valley offered many cultural and extracurricular opportunities. The students put on a wonderful talent night at its Annual Pasta Palooza evening at the High School which was very well attended and filled with some tremendous entertainment. There were also the classic plays the Prince and the Pauper and Around the World in Eighty Days, band performances, Key Club events and Model United Nations events throughout the year.

In the coming year Mystic Valley will continue to pursue finding a permanent home to play its many athletic events and house its growing extracurricular needs. With the school approaching its cap of 1,400 students we are asking the Department of Elementary and Secondary Education to raise that cap slightly in order to accommodate the larger class sizes we are retaining at the High School level now.

Finally of great note was the fact that Dr Sandra Stotsky, a State Board of Education member, delivered this years' commencement address at graduation. She has also cited Mystic Valley very positively in editorials she has submitted to regional newspapers. In closing I wish as always to thank the leadership, parent volunteers and the dedicated staff which has made our Mission a reality for hundreds of students and families.

Very Truly Yours,  
Neil C. Kinnon

*Neil C. Kinnon*

Chairman, Board of Trustees

# MYSTIC VALLEY REGIONAL CHARTER SCHOOL

## Mission Statement

*The mission of the Mystic Valley Regional Charter School is to provide the opportunity of a world class education characterized by a well mannered, disciplined and structured academic climate. Central to Mystic Valley's academic environment is the incorporation of selected core virtues and the fundamental ideals of our American Culture, which are embodied in the Declaration of Independence and the United States Constitution.*

## 2008-2009 School Performance in Relation to the Accountability Plan

### 1. Faithfulness to Charter

Students at Mystic Valley will contribute to their community and develop a knowledge of the core virtues and fundamental ideals of our American Culture.

#### Goal 1.1

All graduating seniors will have contributed 150 hours of community service over the course of their high school years.

#### Indicator 1.1

All seniors contributed at least 150 hours of community service over their high school years prior to their graduation in June. Many of the 41 seniors exceeded the required 150 hours.

#### Goal 1.2

All Mystic Valley students will earn a passing grade in a daily class in character education each year.

#### Indicator 1.2

All students in grades K-12 earned a year end passing grade in character education for school year 2008-2009.

#### Goal 1.3

All Mystic Valley students will be educated regarding the important ideals of the Declaration of Independence and the U.S. Constitution through daily exposure to these documents in printed form as well as field trips, projects, recitation, speakers and school-wide observance of pertinent national holidays.

#### Indicator 1.3

Mystic Valley students are educated about the essential ideals articulated in the founding documents through a variety of methods.

## MYSTIC VALLEY REGIONAL CHARTER SCHOOL

Some of these are:

- All classrooms in the three buildings have affixed to the walls copies of the Declaration of Independence and the U.S. Constitution. Students are instructed as to the meaning and importance of these documents in age-appropriate fashion.
- The 7<sup>th</sup> and 8<sup>th</sup> grade walked the Freedom Trail and visited historical sites during their field trip in June.
- The entire 7<sup>th</sup> grade participated in a Middle School Public Speaking contest sponsored by the Boston Branch of the English Speaking Union that focused on great speeches in American history. Mystic Valley placed 3 students in the final round of 9.
- The entire school begins each morning with The Pledge of Allegiance. Each classroom is fitted with an American flag.
- Mystic Valley organizes various assemblies to commemorate important holidays. This year historian Dr. Peter Gibbon gave an assembly on the heroism of George Washington to all high school students. K-8 students received cherry pie to commemorate Washington's birth and did in-class activities to learn more about Washington's indispensable contribution to American ideals and culture.
- An assembly was held to commemorate the two hundredth anniversary of Abraham Lincoln's birth. This included a series of films and a recitation of the Gettysburg Address for all high school students.
- An multimedia assembly was held on Veteran's Day to highlight the contributions of those who fought for freedom and enrich student understanding of sacrifices made on behalf of America.
- New pictures were installed in the high school highlighting the contributions that built our American culture. These included depictions of the signing of the Declaration, the Battles of Lexington and Concord, Speeches of Dr. Martin Luther King, and the contributions of the Tuskegee Airmen and the Harlem Renaissance.

In addition, Mystic Valley illustrated the ideals of responsible American citizenship through its many community-based activities.

The Mystic Valley Regional Charter School worked with the Mayor's office of Malden on subjects ranging from transportation to school safety. Mystic Valley collaborated with the Malden Lacrosse League to promote extracurricular opportunities to students. Mystic Valley is also a member of the Malden Chamber of Commerce and is represented at the Malden Kiwanis Club. Mystic Valley staff participated for the sixth year consecutively at the Malden Trivia to raise funds for the Malden Public Library. Our school has made donations throughout the year to a numerous non-profit, charitable organizations. Students have volunteered to clean local parks and to serve the elderly and disabled in our community.

The Mystic Valley Regional Charter School participated with the local communities in celebration of various holidays and special events by marching in parades and participating in the annual Remembrance Tree ceremony at City Hall. The school has also been the subject of articles and editorials in regional newspapers. The students of Mystic Valley visited senior citizen homes to serve meals and entertain the residents of these communities. Mystic Valley also helps support the neighborhood 4<sup>th</sup> of July celebration by providing chairs and tables for this annual event.

# MYSTIC VALLEY REGIONAL CHARTER SCHOOL

## 2. Academic Program

Students at Mystic Valley will demonstrate competency in English and mathematics and be prepared to continue their education.

### Goal 2.1

Students scoring at or above proficient on the ELA MCAS will equal or exceed the proficiency level of the weighted composite average of the sending districts on at least 80% of the tests taken by students in grades three through ten.

### Indicator 2.1

The chart below shows Mystic Valley equaled or exceeded the weighted composite average for proficiency for the district on 6 of the 7 (86%) 2008 ELA MCAS exams. For all grades, Mystic Valley's proficiency level was 13% higher than that of the sending districts.

**District Comparisons with Percentages of MVRCS Students in Grades Three through Ten Sending Districts of 2008 MCAS**

3 <sup>rd</sup> Grade ELA	% of Students	Actual 3 <sup>rd</sup> Grade Reading A,P District Score	Weighted 3 <sup>rd</sup> Grade Reading A,P District Score	4 <sup>th</sup> Grade ELA	% of Students	Actual 4 <sup>th</sup> Grade ELA A, P District Score	Weighted 4 <sup>th</sup> Grade ELA A, P, District Score
Malden	38%	37%	14.06%	Malden	25%	34%	8.50%
Stoneham	3%	60%	1.80%	Stoneham	2%	51%	1.02%
Wakefield	4%	69%	2.76%	Wakefield	6%	60%	3.60%
Everett	17%	41%	6.97%	Everett	27%	32%	8.64%
Melrose	15%	70%	10.50%	Melrose	17%	59%	10.03%
Medford	11%	52%	5.72%	Medford	9%	45%	4.05%
Other*	12%	48%	5.76%	Other	14%	42%	5.83%
<b>Total</b>	<b>100%</b>		<b>47.57%</b>	<b>Total</b>	<b>100%</b>		<b>41.67%</b>
<b>MVRCS</b>	<b>100%</b>	<b>45%</b>		<b>MVRCS</b>	<b>100%</b>	<b>42%</b>	
% Variance			<b>-5.40%</b>	% Variance			<b>0.78%</b>

## MYSTIC VALLEY REGIONAL CHARTER SCHOOL

5 <sup>th</sup> Grade ELA	% of Students	Actual 5 <sup>th</sup> Grade Science A, P District Score	Weighted 5th Grade Science A, P, District Score
Malden	29%	46%	13.34%
Stoneham	4%	70%	2.80%
Wakefield	3%	67%	2.01%
Everett	20%	45%	9.00%
Melrose	17%	71%	12.07%
Medford	17%	59%	10.03%
Other	10%	55%	5.47%
<b>Total</b>	<b>100%</b>		<b>54.72%</b>
MVRCS	100%	56%	
% Variance			<b>2.34%</b>

6 <sup>th</sup> Grade ELA	% of Students	Actual 6 <sup>th</sup> Grade Math A, P District Score	Weighted 6th Grade Math A, P, District Score
Malden	38%	61%	23.18%
Stoneham	2%	69%	1.38%
Wakefield	5%	71%	3.55%
Everett	20%	51%	10.20%
Melrose	17%	74%	12.58%
Medford	9%	63%	5.67%
Other	9%	62%	5.59%
<b>Total</b>	<b>100%</b>		<b>62.15%</b>
MVRCS	100%	74%	
% Variance			<b>19.06%</b>

7 <sup>th</sup> Grade ELA	% of Students	Actual 7 <sup>th</sup> Grade ELA A, P District Score	Weighted 7th Grade ELA A, P, District Score
Malden	50%	64%	32.00%
Stoneham	4%	67%	2.68%
Wakefield	3%	75%	2.25%
Everett	14%	60%	8.40%
Melrose	5%	80%	4.00%
Medford	13%	70%	9.10%
Other	11%	66%	7.22%
<b>Total</b>	<b>100%</b>		<b>65.65%</b>
MVRCS	100%	78%	
% Variance			<b>18.81%</b>

8 <sup>th</sup> Grade ELA	% of Students	Actual 8th Grade ELA A, P District Score	Weighted 8th Grade ELA A, P, District Score
Malden	32%	72%	23.04%
Stoneham	4%	82%	3.28%
Wakefield	3%	84%	2.52%
Everett	16%	69%	11.04%
Melrose	21%	86%	18.06%
Medford	14%	70%	9.80%
Other	10%	75%	7.53%
<b>Total</b>	<b>100%</b>		<b>75.27%</b>
MVRCS	100%	94%	
% Variance			<b>24.89%</b>

## MYSTIC VALLEY REGIONAL CHARTER SCHOOL

10 <sup>th</sup> Grade ELA	% of Students	Actual 10 <sup>th</sup> Grade ELA A, P District Score	Weighted 10th Grade ELA A, P, District Score
Malden	53%	67%	35.51%
Stoneham	2%	84%	1.68%
Wakefield	2%	85%	1.70%
Everett	9%	61%	5.49%
Melrose	16%	85%	13.60%
Medford	7%	74%	5.18%
Other	11%	71%	7.81%
<b>Total</b>	<b>100%</b>		<b>70.97%</b>
<b>MVRCS</b>	<b>100%</b>	<b>92%</b>	
<b>% Variance</b>			<b>29.64%</b>

### Goal 2.2

Students scoring at or above proficient on the Math MCAS will equal or exceed the proficiency level of the weighted composite average of the sending districts on at least 80% of the tests taken by students in grades three through ten.

### Indicator 2.2

The chart below shows Mystic Valley equaled or exceeded the weighted composite average for proficiency for the district on all 7 of the 7 (100%) 2008 Math MCAS exams. For all grades, Mystic Valley's proficiency level was 18% higher than that of the sending districts.

# MYSTIC VALLEY REGIONAL CHARTER SCHOOL

## District Comparisons with Percentages of MVRCS Students in Grades Three through Ten Sending Districts of 2008 MCAS

3 <sup>rd</sup> Grade Math	% of Students	Actual 3 <sup>rd</sup> Grade Math A,P District Score	Weighted 3 <sup>rd</sup> Grade Math A,P District Score	4 <sup>th</sup> Grade Math	% of Students	Actual 4 <sup>th</sup> Grade math A, P District Score	Weighted 4 <sup>th</sup> Grade Math A, P, District Score
Malden	38%	46%	17.48%	Malden	25%	36%	9.00%
Stoneham	3%	65%	1.95%	Stoneham	2%	39%	0.78%
Wakefield	4%	77%	3.08%	Wakefield	6%	65%	3.90%
Everett	17%	58%	9.86%	Everett	27%	37%	9.99%
Melrose	15%	74%	11.10%	Melrose	17%	55%	9.35%
Medford	11%	49%	5.39%	Medford	9%	40%	3.60%
Other*	12%	56%	6.72%	Other	14%	43%	5.96%
<b>Total</b>	<b>100%</b>		<b>55.58%</b>	<b>Total</b>	<b>100%</b>		<b>42.58%</b>
<b>MVRCS</b>	<b>100%</b>	<b>56%</b>		<b>MVRCS</b>	<b>100%</b>	<b>49%</b>	
% Variance			<b>0.76%</b>	% Variance			<b>15.07%</b>

5 <sup>th</sup> Grade Math	% of Students	Actual 5 <sup>th</sup> Grade Science A, P District Score	Weighted 5 <sup>th</sup> Grade Science A, P, District Score
Malden	29%	33%	9.57%
Stoneham	4%	53%	2.12%
Wakefield	3%	62%	1.86%
Everett	20%	36%	7.20%
Melrose	17%	55%	9.35%
Medford	17%	50%	8.50%
Other	10%	43%	4.29%
<b>Total</b>	<b>100%</b>		<b>42.89%</b>
<b>MVRCS</b>	<b>100%</b>	<b>58%</b>	
% Variance			<b>35.23%</b>

6 <sup>th</sup> Grade Math	% of Students	Actual 6 <sup>th</sup> Grade ELA A, P District Score	Weighted 6 <sup>th</sup> Grade ELA A, P, District Score
Malden	38%	52%	19.76%
Stoneham	2%	50%	1.00%
Wakefield	5%	71%	3.55%
Everett	20%	35%	7.00%
Melrose	17%	56%	9.52%
Medford	9%	49%	4.41%
Other	9%	50%	4.47%
<b>Total</b>	<b>100%</b>		<b>49.71%</b>
<b>MVRCS</b>	<b>100%</b>	<b>60%</b>	
% Variance			<b>20.69%</b>

## MYSTIC VALLEY REGIONAL CHARTER SCHOOL

7 <sup>th</sup> Grade Math	% of Students	Actual 7 <sup>th</sup> Grade Math A, P District Score	Weighted 7 <sup>th</sup> Grade Math A, P, District Score
Malden	50%	41%	20.50%
Stoneham	4%	37%	1.48%
Wakefield	3%	47%	1.41%
Everett	14%	27%	3.78%
Melrose	5%	49%	2.45%
Medford	13%	44%	5.72%
Other	11%	40%	4.37%
<b>Total</b>	<b>100%</b>		<b>39.71%</b>
<b>MVRCS</b>	<b>100%</b>	<b>49%</b>	
% Variance			23.40%

8 <sup>th</sup> Grade Math	% of Students	Actual 8 <sup>th</sup> Grade Math A, P District Score	Weighted 8 <sup>th</sup> Grade Math A, P, District Score
Malden	32%	39%	12.48%
Stoneham	4%	56%	2.24%
Wakefield	3%	55%	1.65%
Everett	16%	32%	5.12%
Melrose	21%	57%	11.97%
Medford	14%	43%	6.02%
Other	10%	44%	4.39%
<b>Total</b>	<b>100%</b>		<b>43.87%</b>
<b>MVRCS</b>	<b>100%</b>	<b>49%</b>	
% Variance			11.70%

10 <sup>th</sup> Grade Math	% of Students	Actual 10 <sup>th</sup> Grade Reading A, P District Score	Weighted 10 <sup>th</sup> Grade Reading A, P, District Score
Malden	53%	64%	33.92%
Stoneham	2%	75%	1.50%
Wakefield	2%	87%	1.74%
Everett	9%	52%	4.68%
Melrose	16%	79%	12.64%
Medford	7%	69%	4.83%
Other	11%	67%	7.33%
<b>Total</b>	<b>100%</b>		<b>66.64%</b>
<b>MVRCS</b>	<b>100%</b>	<b>79%</b>	
			18.55%

# MYSTIC VALLEY REGIONAL CHARTER SCHOOL

**Goal 2.3**

Core scores for the IOWA Tests of Basic Skills will show an average of one year of growth for grades K-8. (A core score is an average of math, language, and reading scores)

**Indicator 2.3**

The chart below shows that for grades K-8, Mystic Valley showed an average increase of 1.34 per grade from spring 2008 to spring 2009.

### SPRING 08 TO SPRING 09 COMPARISON

Grade	READING				LANGUAGE		
	SPRING 08	SPRING 09	GROWTH		SPRING 08	SPRING 09	GROWTH
K	K.7	1.7	1		1.2	2	0.8
1	1.9	2.9	1		2.1	2.8	0.7
2	2.5	3.6	1.1		2.3	3.1	0.8
3	3.9	5	1.1		3.3	5.3	2
4	4.6	6	1.4		5	6.7	1.7
5	6.2	7.5	1.3		6.9	9.2	2.3
6	7.2	8.5	1.3		9	10.2	1.2
7	8.5	10.4	1.9		10.5	12.3	1.8
8	9.9	12.3	2.4		11.4	13+	1.6+
<b>AVERAGE=</b>			<b>1.39</b>	<b>AVERAGE=</b>			<b>1.41</b>

Grade	MATH				CORE		
	SPRING 08	SPRING 09	GROWTH		SPRING 08	SPRING 09	GROWTH
K	K.8	2	1.2		K.9	1.8	0.9
1	2	2.6	0.6		1.9	2.7	0.8
2	2.3	3.5	1.2		2.4	3.3	0.9
3	3.6	5.1	1.5		3.6	5.1	1.5
4	4.7	6.2	1.5		4.7	6.2	1.5
5	6.5	8.1	1.6		6.5	8.2	1.7
6	7.7	9.3	1.6		7.8	9.3	1.5
7	9.4	11.7	2.3		9.4	11.3	1.9
8	10.9	13+	2.1+		10.6	13+	2.4+
<b>AVERAGE=</b>			<b>1.44</b>	<b>AVERAGE=</b>			<b>1.34</b>

## MYSTIC VALLEY REGIONAL CHARTER SCHOOL

### Goal 2.4

At least 80% of high school students will pass the MCAS tests required for graduation on the first attempt.

### Indicator 2.4

100 % of the class of 2010 passed the 10<sup>th</sup> grade MCAS ELA and Math exams. 97% of the class of 2011 passed the 9<sup>th</sup> grade MCAS Biology exam. Overall, 99% of Mystic Valley high school students passed the MCAS tests on their first try.

### Goal 2.5

100% of high school students will apply to a college, university, or military service.

### Indicator 2.5

100% of Mystic Valley's senior class applied and were accepted to a college, university or military service.

### Goal 2.6

Mystic Valley Regional Charter School will make Adequate Yearly Progress (AYP) every year in the aggregate and for all statistically significant subgroups in math and language arts.

### Indicator 2.6

Mystic Valley achieved AYP for the aggregate with a performance rating of **high** for ELA and **moderate** for Mathematics.

50% of statistically significant subgroups achieved AYP

50% of statistically significant subgroups need improvement.

## MYSTIC VALLEY REGIONAL CHARTER SCHOOL

The school's curriculum comprises English Language Arts, Mathematics, History (includes Geography component), Spanish, Latin, Physical Sciences (Chemistry, Physics, Biology), Physical Education, Music, Art, Drama, and Character Education. These disciplines are taught over the course of the K-8 grades and through High School.

School-wide instructional practice involves a combination of direct instruction along with opportunities for directed practice, discussion, question and answer, and individual projects. Expectations for instructional practice are conveyed to teachers through a school-wide system of Lead Teachers and Dept. Chairs as well as individualized coaching, monthly professional development meetings and an extensive series of yearly meetings at the beginning of each school year.

Program evaluation takes place on a weekly basis under the supervision of Lead Teachers, Professional Development Coordinators and Dept. Chairs. This arrangement, whereby teachers submit weekly plans and reports of progress, allows for the close monitoring of student progress and the quality of curriculum implementation.

School culture is promoted through a uniformly implemented process of behavior management that provides clear consequences for disruptive behavior as well as encouragement for good behavior. This process, along with a clearly defined dress code and the emphasis on the elements of character in the daily character ed class, allows the students to gradually internalize the school culture of virtuous behavior and the building of well-mannered, respectful learning community.

Diverse learners are accommodated through close teacher interaction as well as continual collaboration with the school's extensive Special Education Dept. along with a number of external consultants. In addition, the school provides training regarding English language learner needs at its regular professional development meetings. Students who demonstrate need are placed on Individualized Education Plans or provided with 504 accommodations in consultation with parents and teachers.

Supervision and evaluation of teachers is facilitated by Department Chairs, Lead Teachers, Professional Development Coordinators, and the Administrative Team. There are numerous opportunities for informal evaluation and guidance at regular meetings. Teachers are encouraged to confer with more experienced colleagues in confronting challenges to their own professional development. Additionally, there are opportunities for several formal evaluations during the course of the year involving classroom observation and meetings. Evaluation results are discussed with individual teachers and plans made to consolidate strengths and address weaknesses.

Professional development activities extend throughout the school year. A two-week period at the beginning of the school year is set aside for extensive training in the school's mission statement, policies and procedures. This opportunity also allows teachers to confer with colleagues and Dept. Chairs regarding lesson planning, curriculum implementation and teaching techniques. Guest speakers address relevant issues including statutory reporting guidelines, special education requirements, medical updates, and curricular training.

## MYSTIC VALLEY REGIONAL CHARTER SCHOOL

Monthly plenary meetings of school faculty and staff provide opportunities for collegial exchange and further enrichment in matters pertaining to the school's mission, curriculum, procedures and policies. Weekly smaller group meetings allow for more specified training and informative exchange. In addition, during the course of the year the school supports conference attendance for faculty to provide professional development in such areas as the International Baccalaureate Program, Core Knowledge, and the teaching of American history.

The effectiveness of professional development is assessed through formal and informal consultation among the Administrative Team, Dept. Chairs, Lead Teachers, Professional Development Coordinators, and external consultants.

### 3. Organizational Viability

Mystic Valley will demonstrate a viable and sustainable organization in its finances, enrollment and attrition.

#### Goal 3.1

Mystic Valley will demonstrate sustainability by maintaining an admission waitlist of 30% of the school's total enrollment each year.

#### Indicator 3.1

Mystic Valley maintained an admission waitlist of 150% of the school's total enrollment.

#### Goal 3.2

An annual audit by an independent agency will show no material findings and validate the school's sound financial status.

#### Indicator 3.2

Mystic Valley's most recent audit by an independent agency indicated that there were no material findings and validated the school's sound financial status.

#### Goal 3.3

Each year, student withdrawals for reasons other than geographic relocation, transportation or illness will not exceed 15% of the student body.

#### Indicator 3.3

During the past school year, student withdrawals for reasons other than geographic relocation, transportation or illness was 2.7 % of the student body.

During school year 2008-9 the Board of Trustees authorized a request for an amendment to the charter to increase the maximum school enrollment from 1400 to 1500. This request for an amendment is currently under consideration by the DESE.

One official complaint was received by the Board of Trustees regarding an alleged lack of adequate notice regarding the date of the admission lottery. Pursuant to inquiries from the DESE, the Board provided the relevant documentation showing that notice of the admission lottery was appropriately given through the required channels.

## **MYSTIC VALLEY REGIONAL CHARTER SCHOOL**

The Board of Trustees assesses performance of the school and school leaders through a series of relevant criteria. The school Director is evaluated in reference to benchmarks tied to student academic achievement measured through testing, effective implementation of behavioral policies, faculty retention, and incorporation of the school's mission statement into school life. The school Director establishes similar criteria for the Assistant Directors along with Board input.

Family satisfaction is assessed through an analysis of attrition rates, the use of exit surveys, as well as monthly open sessions at Board meetings to access relevant issues of concern. A parent survey will be conducted in the fall to provide additional feedback on the 2008-9 school year.

Budget development for fiscal year 2010 was accomplished through input from Lead Teachers, Dept. Chairs and the school's administration. A proposed budget was then submitted for Board inspection and approval in the spring of 2009.

### **DISSEMINATION ACTIVITIES**

Since being named an official Visitation School by the Core Knowledge Foundation, Mystic Valley has been an active participant in the national Core Knowledge Foundation Conference. Through this medium, the school collaborates with teachers from around the country to spread best practices. The school continues to invite surrounding districts to visit for observation of classes and collaborative engagement. As an official Visitation School, Mystic Valley is a standing resource for any district open to replicating our innovative and highly successful curriculum and practices.

In the 2008-9 school year Mystic Valley collaborated with the districts of Malden, Medford, Everett and Chesea to apply for a Teaching American History Grant to enable an extensive and ongoing exchange of best practices in the teaching of history. A number of Mystic Valley history teachers have committed to a year-long series of classes and seminars involving collaboration with local district teachers. There is every indication that our teachers will continue as participants in a fruitful collaboration in the coming years.

In March of 2009 Mystic Valley extended an invitation to neighboring district legislators and school officials to come to the school for an overview of the school's best practices and recent successes. The ensuing event saw a number of local officials collaborate with the leadership of the school in learning more about the school's innovative practices. The visitors included Melrose School Committee Members Margaret Driscoll, Christine Casatelli and Don Lehman, and Malden School Committee Members Kevin Duffy and Steven Winslow along with a large number of political officials.

Shortly after this outreach, Wakefield School Superintendent Joan Landers and School Committee Member Carmen Urbanas accepted a standing invitation to visit the school and learn more about innovative practices. Superintendent Landers had a fruitful and lengthy discussion with Mystic Valley Superintendent Joseph McCleary on issues such as the Saxon Math program, Direct Instruction, Uniforms, and classroom management techniques. Superintendent Landers followed up with a second visit to observe elementary reading classes and confer with teachers.

# MYSTIC VALLEY REGIONAL CHARTER SCHOOL

Mystic Valley initiated an application for a Dissemination Grant made available through the DESE in the spring of 2009. This grant would further support the school's attempts in the area of dissemination and will continue to be a focus of the school's efforts in this important area.

Another ongoing initiative in this area involves an outreach to various leadership organizations that would provide a regular forum for the exchange of best practices and the dissemination of innovative and successful ideas. This initiative includes inquiries regarding memberships in organizations such as the Massachusetts Association of School Superintendents and the Greater Boston Superintendents' Round Table.

## FINANCIALS FY09

**Mystic Valley Reg. Charter School  
Balance Sheet (Unaudited)  
As of June 30, 2009**

<b>ASSETS</b>	
<b>Current Assets</b>	
Cash and cash equivalents	\$ 5,643,459
Accounts Receivable	30,391
Prepaid Expenses	247,852
<b>Total Current Assets</b>	<u>\$ 5,921,702</u>
<b>Non Current Assets</b>	
Property and Equipment at cost, net of acc. dep.	\$ 9,997,944
Rent Deposits	15,380
<b>Total Other Assets</b>	<u>\$ 10,013,324</u>
<b>Total Assets</b>	<u><u>\$ 15,935,026</u></u>
<b>LIABILITIES</b>	
Accounts Payable	\$ 48,954
Accrued Expenses	14,860
Payroll Liabilities-Other	284
<b>Total Liabilities</b>	<u>\$64,098</u>
<b>Net Assets</b>	
Unrestricted Net Assets	\$ 14,573,949
Current Change in Net Assets	1,296,979
<b>Total Net Assets</b>	<u>\$ 15,870,928</u>
<b>Total Liabilities &amp; Net Assets</b>	<u><u>\$ 15,935,026</u></u>

# MYSTIC VALLEY REGIONAL CHARTER SCHOOL

## Financials (Un-Audited) FY09

### Mystic Valley Regional Charter School Income Statement

For the Twelve Months Ending June 30, 2009

#### Revenues

#### Operating Revenues

State Cap Student	\$	11,792,683
Grant-IDEA Sped-240		184,292
Grant-Title-II		34,289
Grants-Other		40,000
Transportation Revenue-650		277,451
Food Service Revenue		242,210
<b>Total Operating Revenues</b>	<b>\$</b>	<b>12,570,925</b>

#### Non-Operating Revenues

Rental Income		206,750
Interest Income		32,426
Athletic & Recreational Income		113,867
Miscellaneous Income		34,001
Facilities Aid		1,167,235
Student Enrichment Income		37,725
<b>Total Non-Operating Revenues</b>	<b>\$</b>	<b>1,592,004</b>

#### Total Revenues

**\$ 14,162,929**

#### Operating Expenses

Salaries, Wages & Incentive Compensation	\$	6,755,940
Group Insurance & Other		778,883
Fringe Benefits		27,352
Payroll Taxes – General		234,237
Insurance Other		56,805
Student Supplies and Materials		267,695
Athletics and Recreation		381,880
Professional Services		322,313
Contracted Services		1,616,100
Administrative Expense		436,143
Telephone		58,080
Postage & Express Mail		21,458
Electricity		98,515
Gas & Oil Heat		84,769
Water & Sewer		25,389
Waste Disposal		48,877
Building Repairs & Maintenance		428,996
Computer Repairs & Maintenance		7,867
Other Operating & Misc. Expense		2,503
Rent Expense		525,447
Leasing Expense		37,508
Interest Expense		0
Depreciation & Amortization		608,172
Property and Rent Taxes		13,915
Property and Professional Liability		14,400
Bond Interest Expense		12,706
<b>Total Expenses</b>	<b>\$</b>	<b>12,865,950</b>

#### Net Income (Loss)

**\$ 1,296,979**

# MYSTIC VALLEY REGIONAL CHARTER SCHOOL

---

## Mystic Valley Regional Charter School Income Statement Budget For Year Ending June 30, 2010

### Budget FY10 TOTAL

#### Revenues:

State Cap Student - Chapter 70 Funding	11,536,760
Facilities Aid - Chapter 70 Funding	1,099,462
Grants – Other	307,669
Transportation Revenue	200,000
Rental Income	276,000
Federal Lunch Program (Reimb)	132,530
Federal Paying Student Offset	132,500
Interest Income	39,600
Competitive Sports Fees	40,250
Miscellaneous Income	5,004
Student Enrichment Income	4,800
Recreational Program Income	44,000
<b>Total Revenues</b>	<b>13,818,575</b>

#### Expenses:

##### Salaries:

School Leadership	565,597
Administrative Staff	525,121
Teachers - General ED	3,704,427
Teachers – SPED	399,908
Inst. Asst. - General ED	530,307
Inst. Asst. - Special ED	47,586
Health & Guidance	131,329
Library Staff	96,713
Read/MCAS Hours/Advisors	71,150
Incentive Compensation	540,184
<b>Total Salaries</b>	<b>6,612,322</b>

##### Hourly Wage Personnel

Administrative Staff	23,880
Custodial Staff	145,368
Food Service Staff	66,044
Temporary Staff / Substitutes	54,000
<b>Total Hourly Wage Personnel</b>	<b>289,291</b>

##### Taxes and Benefits

Group Insurance and Other	1,134,941
Payroll Taxes	255,360
Insurance Other	76,800
Workers Compensation	36,000
<b>Total Taxes and Benefits</b>	<b>1,503,101</b>

# MYSTIC VALLEY REGIONAL CHARTER SCHOOL

<b>Instructional Expense</b>	<b>Budget FY 10</b>
Library and Reference Books	18,000
Textbooks	96,000
Other Publications	6,000
Instructional Supplies	114,000
Student Incentives	20,000
Testing Materials	53,750
Professional Development	40,850
<b>Total Instructional Expense</b>	<b>348,600</b>

<b>Competitive Sports</b>	
Supplies	54,070
Compensation	168,617
Transportation	47,400
Facilities	27,050
Other	23,850
<b>Total Competitive Sports</b>	<b>320,987</b>

<b>Professional Services</b>	
Legal Fees	60,000
Audit Fees	36,000
Accounting Services	86,200
Professional Service Fees	60,000
Curriculum & Consulting Fees (DI)	102,000
Recruiting Fees	90,000
<b>Total Professional Services</b>	<b>434,200</b>

<b>Vendor Services</b>	
Contracted Transportation	593,000
Contracted Food Service	283,725
Contracted Custodial Services	132,000
Contracted Maintenance Fee	24,000
Contracted SPED	511,308
<b>Total Vendor Services</b>	<b>1,544,033</b>

<b>Administrative Expenses</b>	
Advertising	15,000
Bank Service Charges	9,600
Travel/Auto	10,800
Airfare	19,200
Meals	27,600
Lodging	24,000
Business Expense Other	30,000
Dues and Subscription	44,400
Printing	24,000
Office Supplies and Equipment	104,000
Computer Equipment	24,000
In House Food Service & Supplies	27,600

## MYSTIC VALLEY REGIONAL CHARTER SCHOOL

Conference Fees	1,800
Medical Supplies	13,200
	<u>375,200</u>
<b>Other Operating Expenses</b>	
Telephone	57,600
Postage and Express Mail	18,150
Electricity	112,965
Gas & Oil Heat	95,708
Water and Sewer	17,500
Waste Disposal	49,000
Maintenance & Custodial Supplies	78,000
Building Repairs & Maintenance	264,000
Equipment Repairs & Maintenance	12,000
Recreational Programs	29,997
Computer Repairs & Maintenance	12,000
Miscellaneous Expense	12,000
<b>Total Other Operating Expenses</b>	<u>758,920</u>
<b>Fixed Expenses:</b>	
Rent - St. Joseph's (Main School-Malden)	237,360
Rent - Immaculate (Upper School-Everett)	236,904
Rent - Baptist Church (Hall for Phys. Ed)	24,000
Rent - 45 Lebanon St - Office	15,600
Rent - 671 Salem Street	27,000
Leasing expense	69,720
Property Ins. and RE Taxes	33,600
Depreciation & Amortization	780,000
	<u>1,424,184</u>
<b>Total Expenses</b>	<u>13,610,837</u>
<b>Net Income (Loss)</b>	<u>207,737</u>

# MYSTIC VALLEY REGIONAL CHARTER SCHOOL

## DATA SECTION

INSTRUCTIONAL TIME:	
Total number of instructional days for the 2008-09 school year:	200 Days
First and last day of the 2008-09 school year:	August 24, 2008 – June 26, 2009
Length of school day (please note if schedule varies throughout the week or the year):	8:00 am – 3:30 pm (7 ½ hours)

STUDENT ENROLLMENT INFORMATION:	
Number of students who completed the 2007-08 school year but did not reenroll for the 2008-09 school year (excluding graduates):	47
Total number of students enrolled as of October 1, 2008:	1,311
Total number of students who enrolled during the 2008-09 school year, after October 1, 2008:	12
Total number of students who left during the 2008-09 school year, after October 1, 2008:	3
Total number of students enrolled as of the June 2009 SIMS submission:	1,304
Number of students who graduated at the end of the 2008-09 school year:	41

**In addition to completing this table, please provide a summary of the reasons for student departures (excluding graduation).**

STUDENT DEMOGRAPHIC AND SUBGROUP INFORMATION (for students enrolled as of the June 2009 SIMS submission)		
Race/Ethnicity	# of students	% of entire student body
African-American	207	15.8 %
Asian	155	11.8 %
Hispanic	43	3.3 %
Native American	9	0.1 %
White	863	66.2 %
Native Hawaiian, Pacific Islander	4	0.1 %
Multi-Race, Non-Hispanic	23	0.2 %
Special Education	110	8.4%
Limited English Proficient	0	0
Low Income	231	17.7 %

## MYSTIC VALLEY REGIONAL CHARTER SCHOOL

<b>ADMINISTRATIVE ROSTER FOR THE 2008-09 SCHOOL YEAR</b>			
Title	Brief Job Description	Start date	End date (if no longer employed at the school)
Dr. Joseph McCleary	Director – Responsible for oversight of the day to day responsibilities of the entire district.	September 2007	
Mr. George Benzie	Assistant Director to the High School - Responsible for the day to day responsibilities of the High School.	September 2008	
Mr. Roy Dado	Assistant Director to the High School - Responsible for the day to day responsibilities of the High School.	April 2006	April 2009
Mr. Christopher Finn	Assistant Director to the Lower School - Responsible for the day to day responsibilities of the Lower School (grades K-8).	August 1998	
Mrs. Gina McKinnon	Professional Development Coordinator (grades K-3) – Responsible for Curriculum oversight, staff training and analyzing student assessments.	August 1998	
Mrs. Jennifer Mullen	Professional Development Coordinator (grades 4-6) – Responsible for Curriculum oversight, staff training and analyzing student assessments.	August 1998	
Mr. Rick Veilleux	Business Manager – Responsible for facilities, procurement and business functions of entire district.		

**Organizational Chart is included at the end.**

<b>TEACHERS AND STAFF ATTRITION FOR THE 2008-09 SCHOOL YEAR</b>			
	Number as of the last day of the 2008-09 school year	Departures during the 2008-09 school year	Departures at the end of the school year
Teachers	96	9	14
Other Staff	49	1	4

**In addition to completing this table, please provide a summary of the reasons for teacher and staff departure**

## MYSTIC VALLEY REGIONAL CHARTER SCHOOL

<b>BOARD MEMBERS FOR THE 2008-09 SCHOOL YEAR</b>				
Name	Position on the Board	Committee affiliation(s)	Area of expertise, and/or additional role at school (parent, staff member etc.)	- Number of terms served; - Length of each term, including date of election and expiration
Neil C. Kinnon	Chairman	Building	Business, Parent	Completing his 2 <sup>nd</sup> year of his 4 <sup>th</sup> 3 year term
Francis K. Brown II	Treasurer	Finance, Building	Finance, Parent	Elected to his 4 <sup>th</sup> 3 year term in June 2009
Thomas E. Brennan	Secretary	Building	Law	Completing his 2 <sup>nd</sup> year of his 4 <sup>th</sup> 3 year term
Janice Bissex	Member	Wellness	Author, Parent	Completing her 2 <sup>nd</sup> year of his 4 <sup>th</sup> 3 year term
Leslie Williams	Member	Communications	Education, Parent	Completing her 1st year of his 4 <sup>th</sup> 3 year term

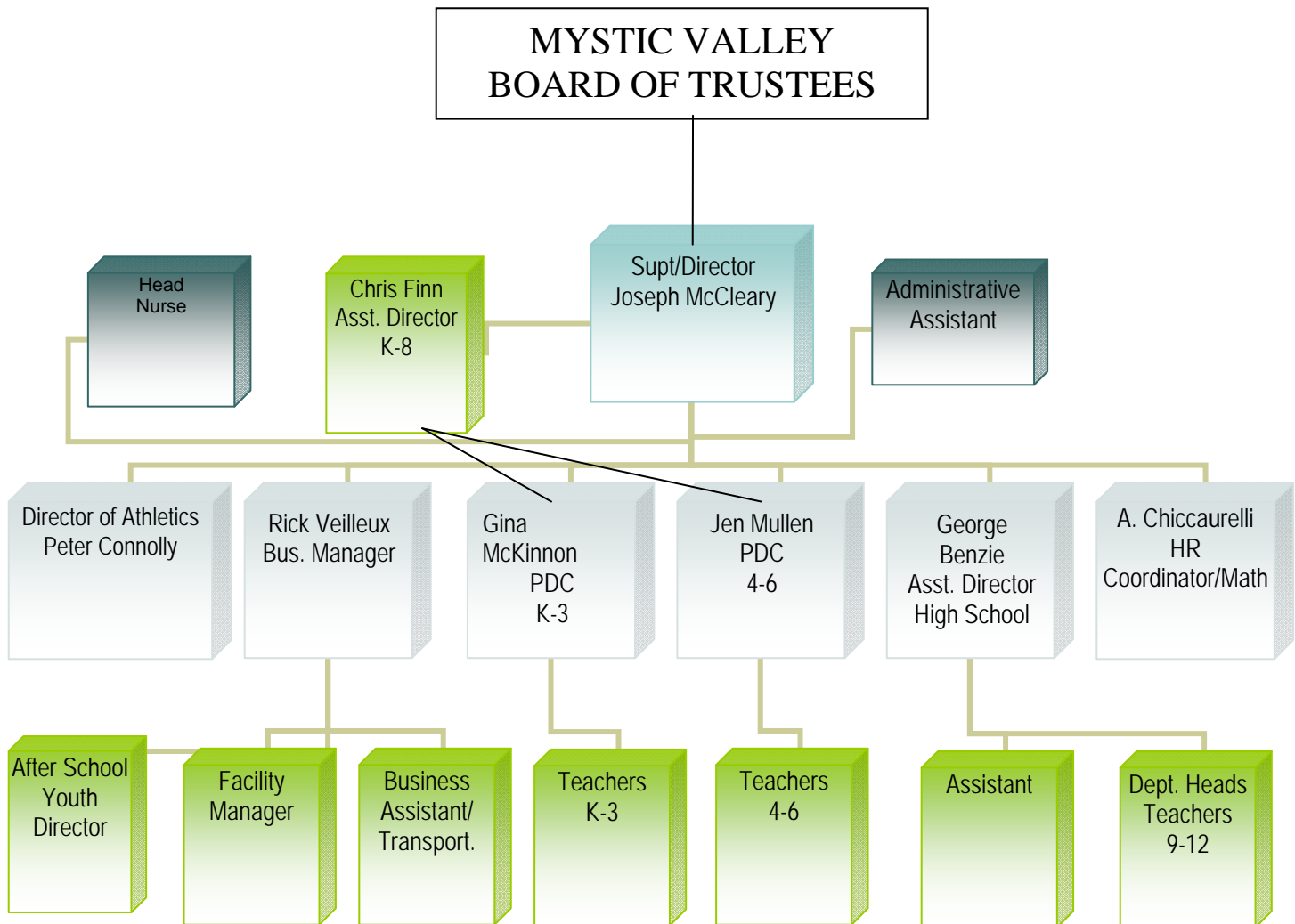
## MYSTIC VALLEY REGIONAL CHARTER SCHOOL

### MCAS Results Spring 2008

MCAS Tests of Spring 2008 Percent of Students at Each Performance Level									
Grade and Subject	Advanced/ Above Proficient		Proficient		Needs Improvement		Warning/ Failing		Students Included
	School	State	School	State	School	State	School	State	
	GRADE 03 - READING	9	15	36	41	43	33	12	
GRADE 03 - MATH	14	25	42	36	36	25	9	14	117
GRADE 04 - ELA	5	8	37	41	49	39	8	13	118
GRADE 04 - MATH	20	20	29	29	36	38	15	13	118
GRADE 05 - ELA	3	13	53	48	39	30	5	8	132
GRADE 05 - MATH	23	22	35	30	32	30	10	17	132
GRADE 05 - SCIENCE	10	17	36	33	48	38	6	12	132
GRADE 06 - ELA	17	15	57	52	23	24	3	8	115
GRADE 06 - MATH	30	23	30	33	28	26	13	18	115
GRADE 07 - ELA	11	12	67	57	19	23	3	8	104
GRADE 07 MATH	11	15	38	32	32	29	20	24	104
GRADE 08 - ELA	15	12	79	63	7	18	0	0	103
GRADE 08 - MATH	14	19	35	30	37	27	15	24	103

## MYSTIC VALLEY REGIONAL CHARTER SCHOOL

GRADE 08 - SCIENCE	0	3	18	36	68	39	14	22	103
GRADE 9 - BIOLOGY	10	14	62	41	24	28	3	17	86
GRADE 10 - ELA	23	23	69	51	8	21	0	4	52
GRADE 10 - MATH	56	43	23	29	21	19	0	9	52
GRADE 10 - SCIENCE	8	14	46	43	46	31	0	12	52



# MYSTIC VALLEY REGIONAL CHARTER SCHOOL